

A photograph of a wooden interior with vertical columns and a large number 10 overlaid. The number 10 is a large, light-colored, semi-transparent graphic element positioned in the upper left quadrant of the image. The background shows a series of vertical wooden columns of varying heights, creating a sense of depth and architectural structure. The lighting is warm and natural, highlighting the grain of the wood.

# 10

architecture  
of substance

---

**Paul McAneary**  
Architects

Paul McAneary embraces  
the rigours of minimalism:  
for him, perfection is all

Judith Wilson  
House & Garden

## About us

Paul McAneary Architects is an award-winning architectural practice based in London engaged in designing a range of residential, retail and cultural projects. Known for a spirit of elegantly refined minimalism, PMA has a proven track record of devising innovative and sustainable architecture and interiors in response to often challenging sites, budgets and programmes.

Its expanding portfolio currently includes work in the UK, predominantly in London, as well as France, Germany, Kazakhstan, Nigeria and the USA.



## An architecture of substance

The idea of substance is crucial to the work of PMA. In its most obvious guise substance speaks of a materiality and the tactile quality of architecture - what things are made of and how they are put together. It also alludes to a rigour informing the ideas behind buildings, as well as their construction and their capacity to endure with dignity in the long term.

Inspired by a spirit of enquiry and economy, the practice cultivates an exploratory approach to detailing and fabrication, based on its own unique culture of research and evaluation.



## Detail

Our work is characterised by a forensic yet pleasurable attention to detail. This discerning approach imbues often quite complex projects with a spirit of rigour and refinement. The choice of materials is critical, as is the way elements are put together to structure space and capture light.

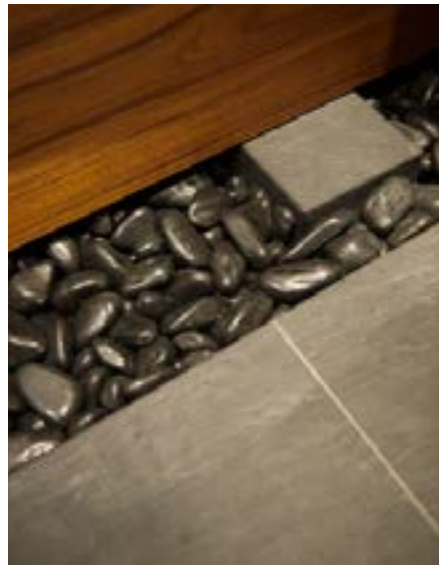
How our buildings weather and work in the long term is of equal concern. Underscored by a culture of technical enquiry and skill, we aim to create exceptional outcomes for clients.



---

Precisely detailed new elements add focus and reconfigure space in a spirit of lightness and openness.





---

Employed with skill and sensitivity, a minimal palette of materials creates architecture with a compelling power and sobriety.

---

Fluid, minimal living spaces cultivate a sense of liberation, evoking the absolute essence of existence.







---

Carefully considered juxtaposition of hard and soft textures orchestrates visual and experiential variety.

## Economy

The intelligently applied economy of resources and materials gives our architecture a distinctive sense of refinement. To do more with less is a perpetual challenge, yet it can elevate formulaic types, such as student residences or low-cost housing, into an architecture whose functionality also has a civic and social presence.

In particular, our ongoing programme of research into modular systems of construction aims to devise new solutions to the provision of efficient and economical urban dwellings in both the UK and abroad.



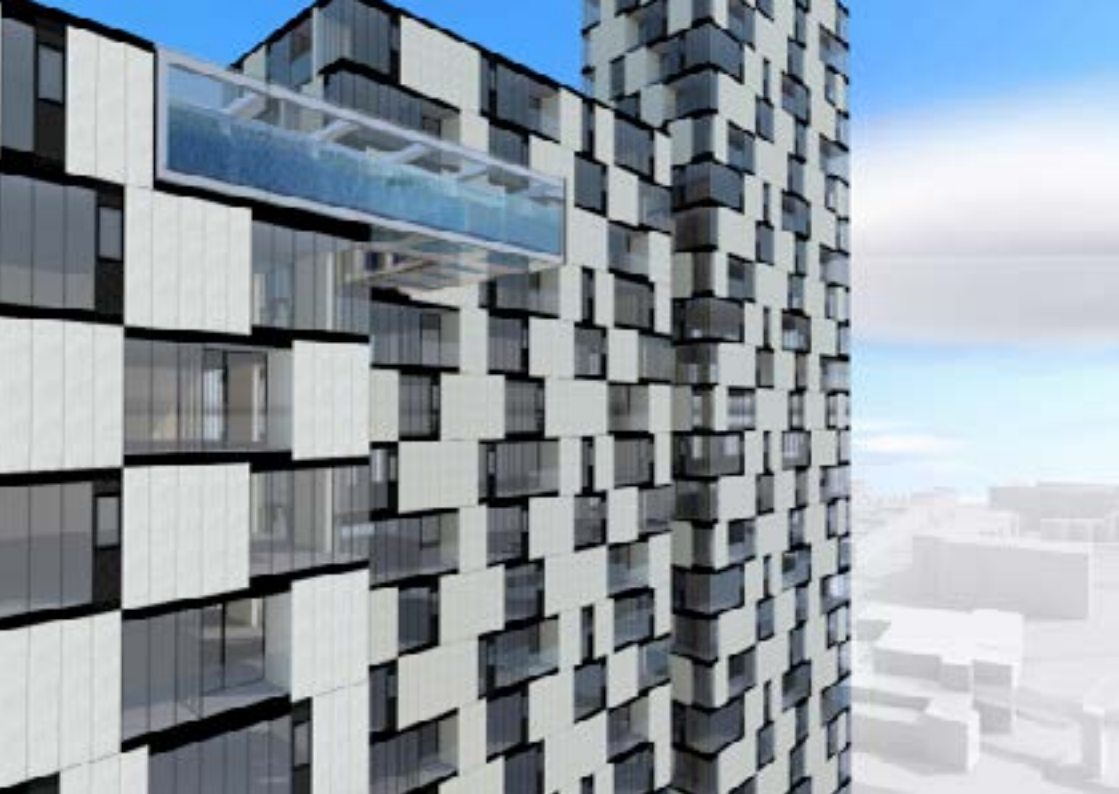


---

Schemes for economical housing units capitalise on existing sites and exploit modular technology.

Reconceptualising the typology of student residences through spatial permeability and a simple yet refined material palette.





---

Proposals for prototypical dwellings encompass tower blocks in London and sustainable houses in Nigeria powered by geothermal energy.

---

On a restrictive urban site, a dual facade provides an effective and ecological response to solar gain and noise pollution.



## Substance

In its most obvious manifestation substance evokes the physical quality of architecture, focusing on materials and the nuances of construction. Substance also has other resonances: a sense of timelessness, authenticity and the ability to age with grace through quotidian use.

It also touches on the idea of rigour, and how this establishes a framework to underscore both the ideas behind buildings as well as the processes of their construction and their capacity to endure over time.





---

A culture of rich materiality and tectonic enquiry makes for an architecture of distinctive presence.



---

Designed to age gracefully over the years, the simple beauty of unadorned, natural textures emphasises notions of constancy.





---

Elements are choreographed to optimise functionality and create an aura of tranquil sophistication.

---

Residential programmes often give rise to customised solutions that inventively exploit the properties of particular materials.



## Light

Through its fluid intensity, light brings buildings to life. Shaped by nature and the seasons, light and shadow can be captured, contained and deployed by means of built form. To us, light represents a highly poetic medium with the potential to choreograph a beguiling and sensuous array of visual and experiential effects.

Our buildings always seek to optimise the seductive qualities of both natural and artificial illumination, its drama and nuances enhanced by highly considered spatial relationship and the choice of materials. Light is not an end in itself. But its impact can touch the soul.





---

Beyond the exigencies of function, light is a powerful tool for animating spaces and details.

---

In subtle explorations of solid and void, buildings are tactfully incised with slots of glazing to transmit light down to lower levels.





---

Connecting space with sky, light washes through interiors, illustrating its transformative potential.

---

When an element is reduced to its essentials, its character comes alive, enhanced by the play of light.





## Featured Projects

15° Degrees Off-White House  
Blackhorse Road Tower  
Chatfield Road Apartments  
Eco-Lever Apartments  
Faceted House 1 & 3  
German Student Housing  
Haptic House  
Hoxton Backpacker Hostel  
Housing in Nigeria

Mint Store  
Oblong House  
PMA Office and Laboratory  
Prototypical Modular Housing  
Spathroom  
Tex-Tonic House  
Tortoise Enclosure  
Wedding Pavilion  
White Oak House

In addressing a task, one almost always has several possible options. They may all be practical and functional. But they lack the aesthetic aspect that raises it to architecture

Arne Jacobsen  
Architect, 1902-1971





6 Flitcroft Street  
London  
WC2H 8DJ  
0207 2 400 500  
[info@paulmcanearny.com](mailto:info@paulmcanearny.com)  
[paulmcanearny.com](http://paulmcanearny.com)

---

**Paul McAneary**  
Architects