

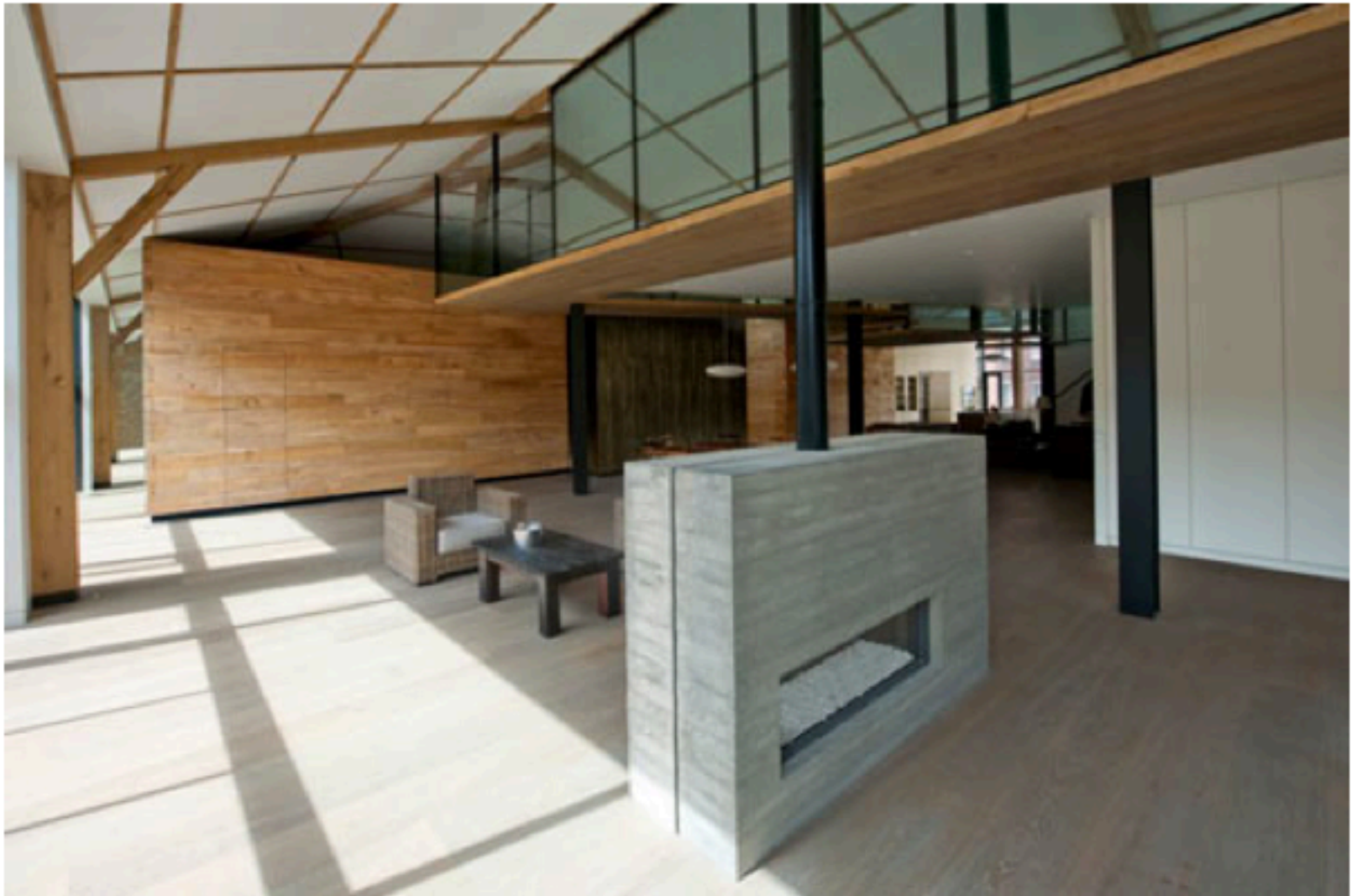


TEX-TONIC HOUSE BY PAUL MCANEARY ARCHITECTS

Posted on 08.04.11 by Jaime in [Architecture](#)

 Like  51 people like this.



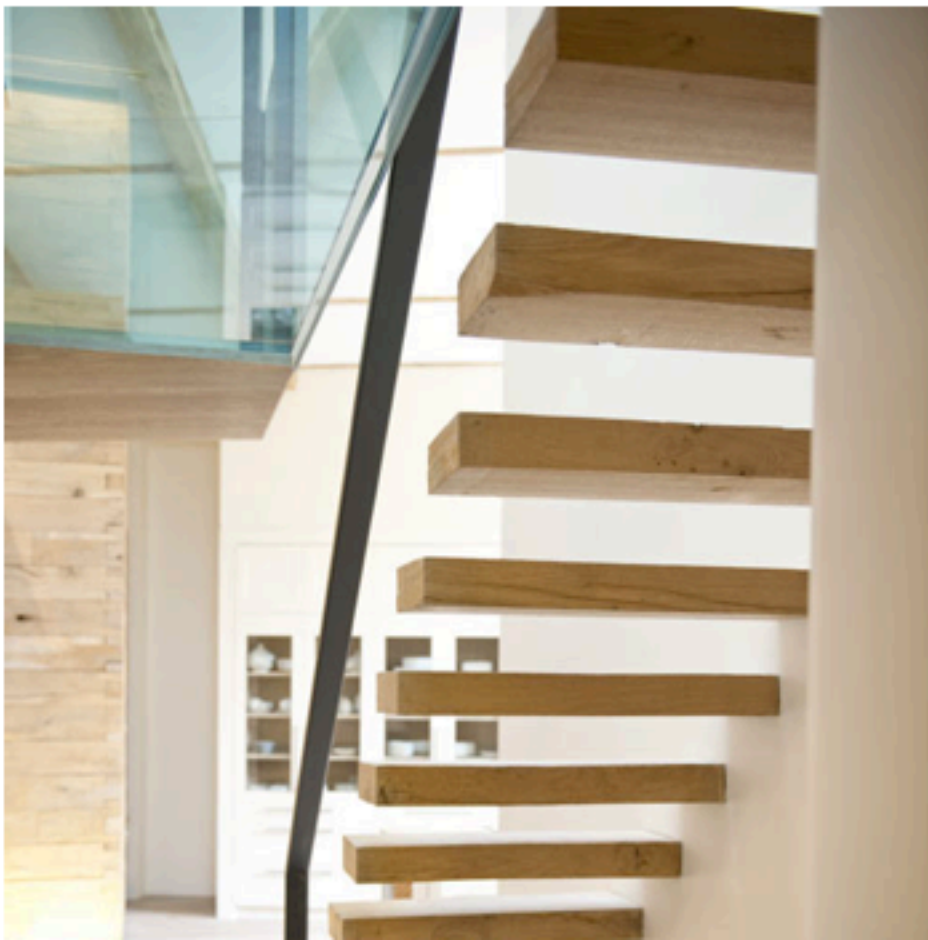
Above a central London post office and Phillips de Pury art auction house located in Victoria, London sit two apartments that were in need of a redesign.

Paul McAneary Architects Ltd has completed the first of these, called Tex Tonic House 1, which is a two-story penthouse apartment.

From the architects:

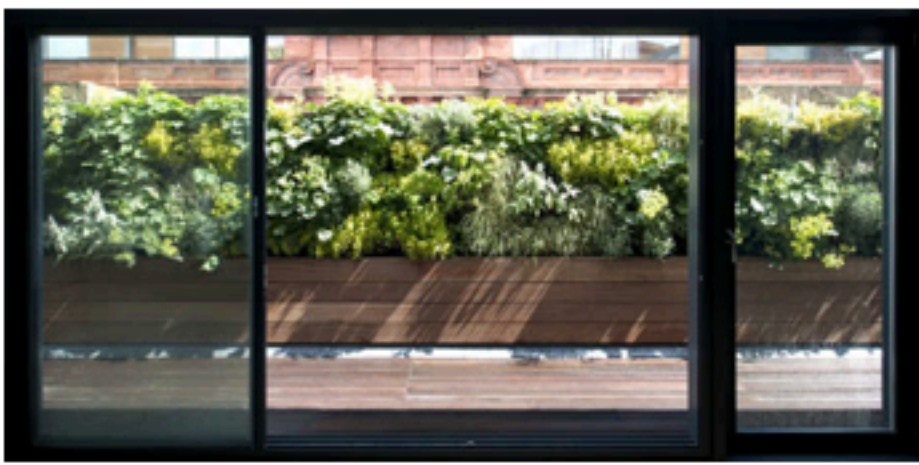
Since, the two apartments are built on top of the existing Central London post office, the postal delivery system has been the inspirational source of the concept design. Paul McAneary Architects responded to the brief by expressing and magnifying the 'post box component-concept-element' into large boxes of natural materials accommodating for the private programme. We placed three bedroom boxes within the large double height loft space, to provide rooms for sleeping accommodation: additional to the master bedroom and two further bedrooms, they accommodate for the master bedroom walk-in wardrobe, en-suite bathroom and a shared bathroom. In line with a more contemporary domesticity, the private programme area is relatively modest in size. The client expressed the desire to have a large versatile living space perfect for relaxation and parties, as a result the living area is spacious and serves multipurpose events.

The overall architectural language is modest and dramatic at the same time: mixed timber tectonics have been applied with an emphasis on their texture and intrinsic beauty. The amount of 'vertical natural light' flooding through the large skylights, walk on glass and the horizontal curtain walling maximise the exquisite effect of the natural grain and pattern of the timber ceiling, oak beams and floor as well as the bronze 'timber texture'.









Tex Tonic House by Paul McAneary Architects

Completion Date: November 2010

Area: 466 sqm

Location: Victoria, London

Client: Private

Design Team: **Paul McAneary Architects Ltd**

Contractor: L. S. Construction

Supplier: The Plank Co., Black Isle Bronze Ltd, DirectStone Ltd, Palmalisa
Zantetedeschi

Photographer: Paul McAneary Architects Ltd.