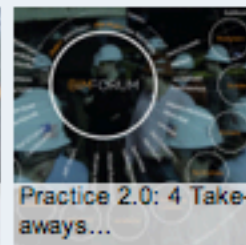
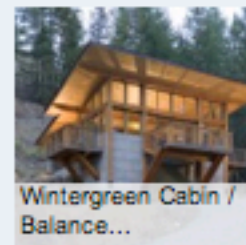


* Featured



«

Architects Local To You

Whatever Your Project, Call Us When You Need Architects.

www.colinminnettriba.co.uk

Architect in SWFrance

Eco-build; bilingual services RIBA and Ordres des Architectes

www.timharrisarchitect.com

A Bill of Quantities

Software for Free. Download It Immediately!

www.primus-dcf.com

Argyll architect

Architect services for residential commercial and community projects

www.tommccardel.co.uk

AdChoices ▶

Architect: Free Quotes

Get and Compare up to 5 Quotes from Architects in your Area. Free

www.ServiceMagic.co.uk/Architect

DETAIL For Architects

Subscribe to DETAIL now and get this high quality magazine for less

www.detail.de

Barratt Image Ads

300x250 swf buy rent house Image ads

www.barratthomes.co.uk/Show_Homes

Architects?

Post a request for architect help Compare quotes. Free & easy

Servicestart.com/architect-quotes

AdChoices ▶

Tex-Tonic House 1 / Paul McAnearny Architects 02

By Megan Jett — Filed under: Houses , Selected , London, Paul McAnearny Architects, Steel, Victoria, Wood

AUG 2011



Bookmark



Share

35

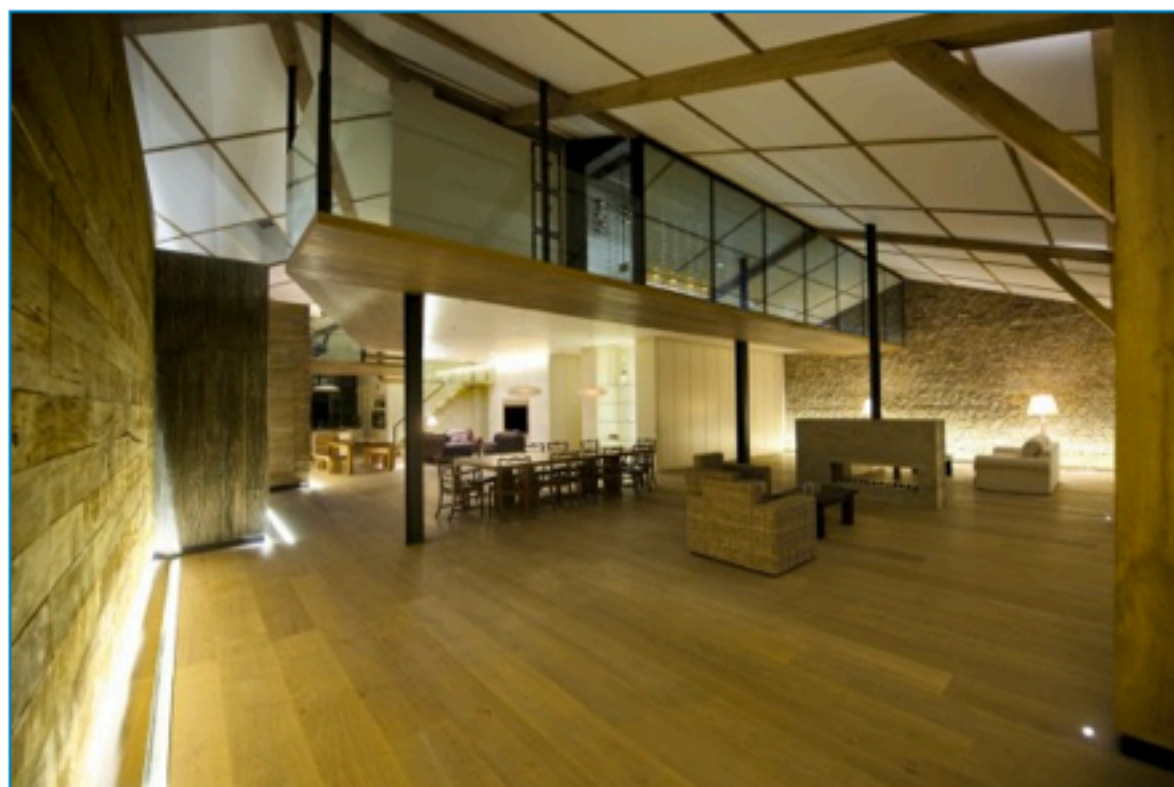


Tweet

26



share by email




Paul McAnearny Architects

Google Custom Search


Search


9156 posts, 202022 comments, 1191 days.


Latest Comments »

 aarti on 2011 United States Best Architecture Schools agree with all that michael has said above. but for an international...[+]

 joão silva bastos on 09FDIP / Spaceworkers horrible stuff! don't copy BIG, he's one of a kind... start by...[+]

 Bopp on Snellen Eye Chart Reinvented for Designers I'm wondering what the translation is, I can't seem to figure...[+]

 sfjohn on Helios Rehab Sanctuary [Solar + Healing] / Team CLS While beautiful & a great idea, as a resident I can tell...[+]

 Johanna on 09FDIP / Spaceworkers beautiful images but plans are a bit awkward to say the least...[+]

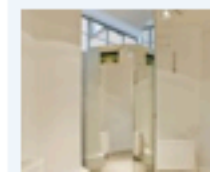
Daily newsletter »

enter your email for daily updates

Submit



Selected buildings »



Architects: [Paul McAnearney Architects](#)

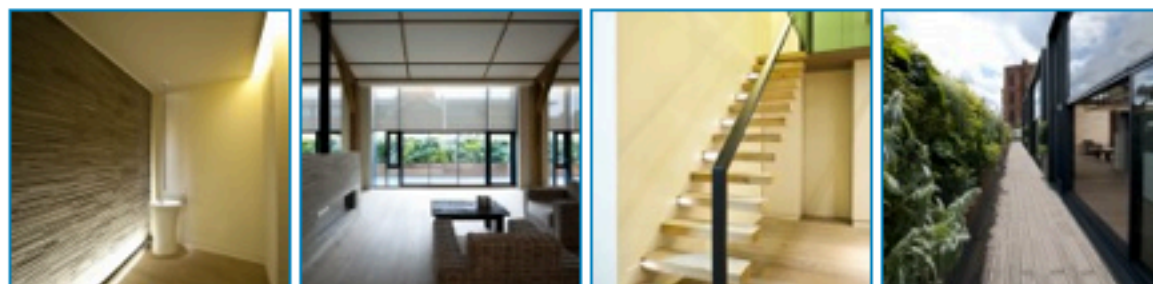
Location: [Victoria, London](#)

Project Year: 2010

Project Area: 466 sqm

Photographs: [Paul McAnearney Architects Ltd](#)

The clients brief in this invited competition was to design two apartments on the top floor of the existing Central London post office and Phillips de Pury art action house in [Victoria, London](#). The client expressed a wish for large volume 'loft' spaces and his desire for a contemporary design and functionality. Paul McAnearney Architects' response won the competition with a proposal for expressed natural tectonics through numerous new details, and even developing a new material type of cast timber bronze.

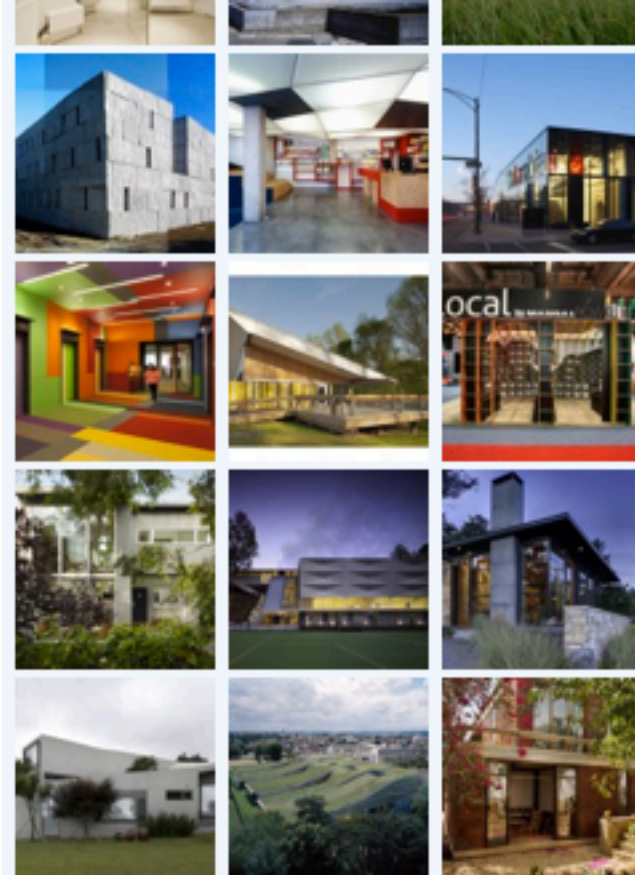


Since, the two apartments are built on top of the existing Central London post office, the postal delivery system has been the inspirational source of the concept design. Paul McAnearney Architects responded to the brief by expressing and magnifying the 'post box component-concept-element' into large boxes of natural materials accommodating for the private programme.



Paul McAnearney Architects

We placed three bedroom boxes within the large double height loft space, to provide rooms for sleeping accommodation: additional to the master bedroom and two further bedrooms, they accommodate for the master bedroom walk-in wardrobe, en-suite bathroom and a shared bathroom. In line with a more contemporary domesticity, the private programme area is relatively modest in size. The client expressed the desire to have a large versatile living space perfect for relaxation and parties, as a result the living area is spacious and serves multipurpose events.



[yours could be here! click for more info](#)

Upcoming Architecture Events »

- | | | | |
|-----------|--|-------------------------|-----------------------------|
| MAR 30 | 'Formations': A SPAN exhibition at the MAK Gallery | Ongoing | read more » |
| MAY 13 | Richard Meier's Model Museum In Long Island City Reopens | Ongoing | read more » |
| MAY 27 | Mark di Suvero's Sculptures featured on Governors Island | Ongoing | read more » |
| JUN 10 | Exhibition: "American City: St. Louis Architecture" | Ongoing | read more » |
| JUN 21 | "BOOM/ROOM: New Estonian Architecture" Opens In Moscow | Ongoing | read more » |
| AUG 04 | RETHINK LA : Perspectives on a Future City | Ongoing | read more » |
| AUG 10 | B*Sessions: Business Seminar Intellectual Property | | read more » |

[got events? invite us! click here](#)

Architecture Books & Magazines »

DETAIL Magazine: Digital Processes



I recently read Detail Magazine's latest issue about Digital Processes. The issue is divided into three parts. The



Proposed Plan

The overall architectural language is modest and dramatic at the same time: mixed timber tectonics have been applied with an emphasis on their texture and intrinsic beauty. The amount of 'vertical natural light' flooding through the large skylights, walk on glass and the horizontal curtain walling maximise the exquisite effect of the natural grain and pattern of the timber ceiling, oak beams and floor as well as the bronze 'timber texture'.



Paul McAnear Architects

analysis, terrestrial laser scanning, and geographic information systems among...
[Read More / Buy now »](#)

Pamphlet Architecture #30



I recently got the chance to review Pamphlet Architecture #30 titled Coupling / Strategies for Infrastructural Opportunism. From bringing a terminal lake back to life and using landfills as an open space connectors to actively

anticipating the future of...
[Read More / Buy now »](#)

Interiors Construction Manual



The Interiors Construction Manual supports planners in their daily work as a practical planning aid and reference work with the relevant standards, guidelines, reference details and constructional solutions, all

illustrated by built example projects. It brings together the crucial...
[Read More / Buy now »](#)

What our readers are saying...
ArchDaily



ErikFeeds Wintergreen Cabin / Balance Associates Architects: © Steve Keating Photography Wintergreen...
<http://goo.gl/fb/TtJ9M>
 43 minutes ago



archfeeds Via @ArchDaily - Wintergreen Cabin / Balance Associates Architects <http://dlvr.it/fN0K9> #architecture
 43 minutes ago



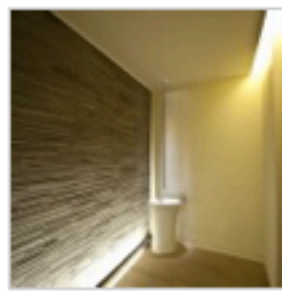
ArchitektScholz #architekt #Cottbus Wintergreen Cabin / Balance Associates Architects: Wintergreen Cabin is...
<http://bit.ly/qbkKAY> #in



Paul McAnearny Architects



Paul McAnearny Architects



Paul McAnearny Architects



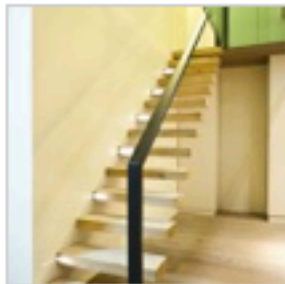
Paul McAnearny Architects



Paul McAnearny Architects



Paul McAnearny Architects



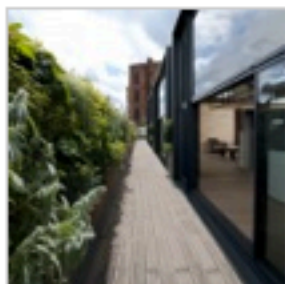
Paul McAnearny Architects



Paul McAnearny Architects



Paul McAnearny Architects



Paul McAnearny Architects



Proposed Mezzanine Plan



Proposed Plan

The work of Ai Weiwei was recently show... <http://bit.ly/q5nUyu> #architecture about 1 hour ago

twitter

Join the conversation

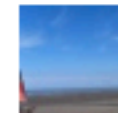


ArchDaily on Facebook

Like

You like this.

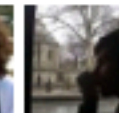
348,047 people like ArchDaily.



Kwamina



Tomas



Pedro



Jenna



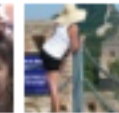
Alvin



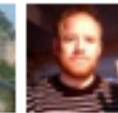
Livia



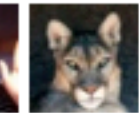
BIGABIGO



Elizabeth



Andreas



Bennett



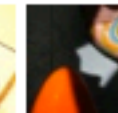
Andrea



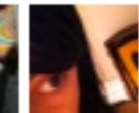
Giuseppe



Alejandra



Oriana



Maria Pin

Cite:

Jett , Megan . "Tex-Tonic House 1 / Paul McAnearny Architects" 02 Aug 2011. [ArchDaily](http://www.archdaily.com/155369). Accessed 08 Aug 2011. <<http://www.archdaily.com/155369>>