



Tex-Tonic House 1 / Paul McAnearny Architects

TOP
STORIES <
1 of 3



UBS Chief
Designer:
Ramifications
likely to
Spread >

Article

Share 0 Retweet 0 Share

Rate this Story 0 0 0

Print Email Share

Text Size + -

By Megan Jett | August 2, 2011 11:23 PM GMT

Paul McAnearny Architects

Architects: [Paul McAnearny Architects](#)

Location: Victoria, London

Project Year: 2010

Project Area: 466 sqm

Photographs: [Paul McAnearny Architects Ltd](#)

The clients brief in this invited competition was to design two apartments on the top floor of the existing Central London post office and Phillips de Pury art action house in Victoria, London. The client expressed a wish for large volume 'loft' spaces and his desire for a contemporary design and functionality. Paul McAnearny Architects' response won the competition with a proposal for expressed natural tectonics through numerous new details, and even developing a new material type of cast timber bronze.



Since, the two apartments are built on top of the existing Central London post office, the postal delivery system has been the inspirational source of the concept design. Paul McAnearny Architects responded to the brief by expressing and magnifying the 'post box component-concept-element' into large boxes of natural materials accommodating for the private programme.

Paul McAnearny Architects

We placed three bedroom boxes within the large double height loft space, to provide rooms for sleeping accommodation: additional to the master bedroom and two further bedrooms, they accommodate for the master bedroom walk-in wardrobe, en-suite bathroom and a shared bathroom. In line with a more contemporary domesticity, the private programme area is relatively modest in size. The client expressed the desire to have a large versatile living space perfect for relaxation and parties, as a result the living area is spacious and serves multipurpose events.

Proposed Plan

The overall architectural language is modest and dramatic at the same time: mixed timber tectonics have been applied with an emphasis on their texture and intrinsic beauty. The amount of 'vertical natural light' flooding through the large skylights, walk on glass and the horizontal curtain walling maximise the exquisite effect of the natural grain and pattern of the timber ceiling, oak beams and floor as well as the bronze 'timber texture'.

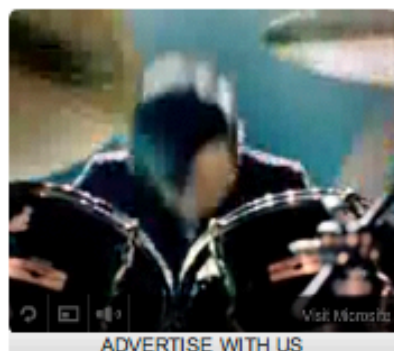
Must Read



Amazon Tablet:
The Only Viable
iPad Contender



A Case for
Redistributing \$5
Trillion to the
Poor



Follow IBTimes



IBTimes TV

More Videos



Netflix Signs "Game Changing" Deal with Dreamworks Animation



2:21
DJIA: Stocks Recovering, ECB Maybe
Considering Stimulus, US Stock Falls 4%